

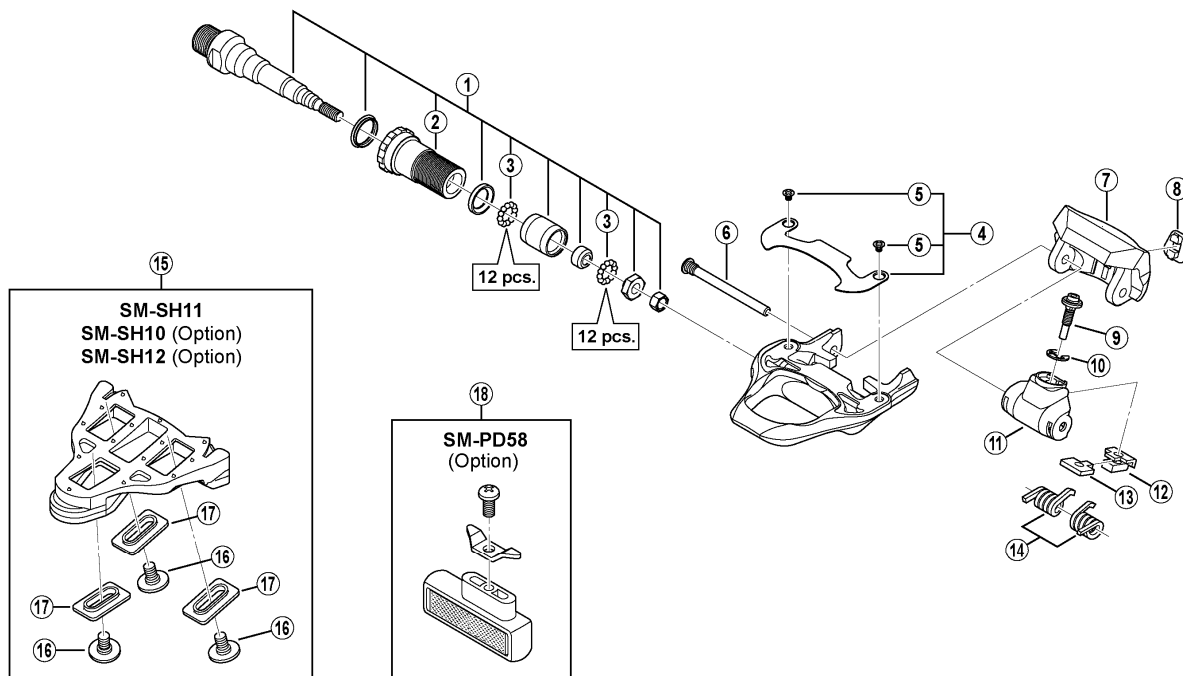
ULTEGRA SPD-SL Pedals

PD-6700

Silver Version

PD-6700-G

Glossy Grey Version



Note: Because the threaded part of the binding pin (Item No.6) has been coated with screw locking adhesive, after removal, a new binding pin should be used in place of the old pin.

PD-7900
PD-5700

ITEM NO.	SHIMANO CODE NO.	DESCRIPTION	INTERCHANGEABILITY		
* 1	Y45J98030	Pedal Axle Assembly (Right / B.C.9/16" x 20T.P.I.)		A	
	Y45J98020	Pedal Axle Assembly (Left / B.C.9/16" x 20T.P.I.)		A	
2	Y43Z13100	Lock Bolt (Right)		A	
	Y43Z14100	Lock Bolt (Left)		A	
3	Y41N98030	Steel Ball (3/32") 62 pcs.	A	A	
4	Y46B98010	Body Cover & Fixing Screws		B	
5	Y42T05000	Body Cover Fixing Screw		A	
6	Y42610300	Binding Pin			
7	Y42U02500	Binding	B	B	
8	Y42U10300	Indicator	B	B	
9	Y45F04100	Spring Adjustment Bolt	A	B	
10	Y42U16000	Adjust E-Ring	A	A	
11	Y42U11900	Spring Cover	B	B	
12	Y42U07000	Adjust Plate Cover	A		
13	Y42U05000	Adjust Plate	A		
14	Y42U98050	Spring (2 pcs.)	A	A	
15	Y42U98010	SM-SH11 Cleat Set (Self-aligning mode/Pair/M5x8mm)	A	A	
	Y42U98020	SM-SH10 Cleat Set (Fixed mode/Pair/Option/M5x8mm)	A	A	
	Y40B98140	SM-SH12 Cleat Set (Front Center Pivot/Pair/Option/M5x8mm)	A	A	
16	Y42U14000	Cleat Fixing Bolt (M5x8mm/1pc.)	B	B	
	Y42U98060	Cleat Fixing Bolt (M5x13.5mm/6pcs./Option)	A	A	
17	Y42U15010	Cleat Washer (Silver/1pc.)	A	A	
18	Y40R98070	SM-PD58 Reflector Unit (Pair/Option)		A	
	Y40R98080	SM-PD58 Reflector Unit (AS/Pair/Option)		A	

A: Same parts.
B: Parts are usable, but differ in materials, appearance, finish, size, etc.
Absence of mark indicates non-interchangeability.

Mar.-2013-2939B
© Shimano Inc. A

Specifications are subject to change without notice.

SHIMANO